



2014 Graphic Communication

Higher

Finalised Marking Instructions

© Scottish Qualifications Authority 2014

The information in this publication may be reproduced to support SQA qualifications only on a non-commercial basis. If it is to be used for any other purposes written permission must be obtained from SQA's NQ Assessment team.

Where the publication includes materials from sources other than SQA (secondary copyright), this material should only be reproduced for the purposes of examination or assessment. If it needs to be reproduced for any other purpose it is the centre's responsibility to obtain the necessary copyright clearance. SQA's NQ Assessment team may be able to direct you to the secondary sources.

These Marking Instructions have been prepared by Examination Teams for use by SQA Appointed Markers when marking External Course Assessments. This publication must not be reproduced for commercial or trade purposes.

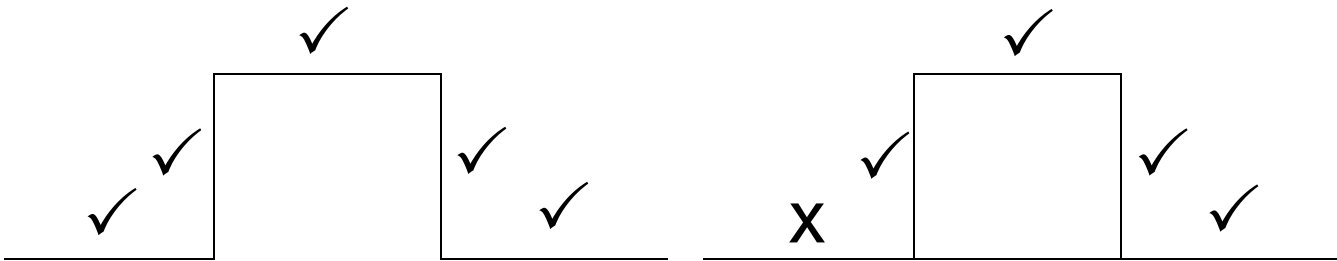
Part One: General Marking Principles for Graphic Communication Higher

This information is provided to help you understand the general principles you must apply when marking candidate responses to questions in this Paper. These principles must be read in conjunction with the specific Marking Instructions for each question.

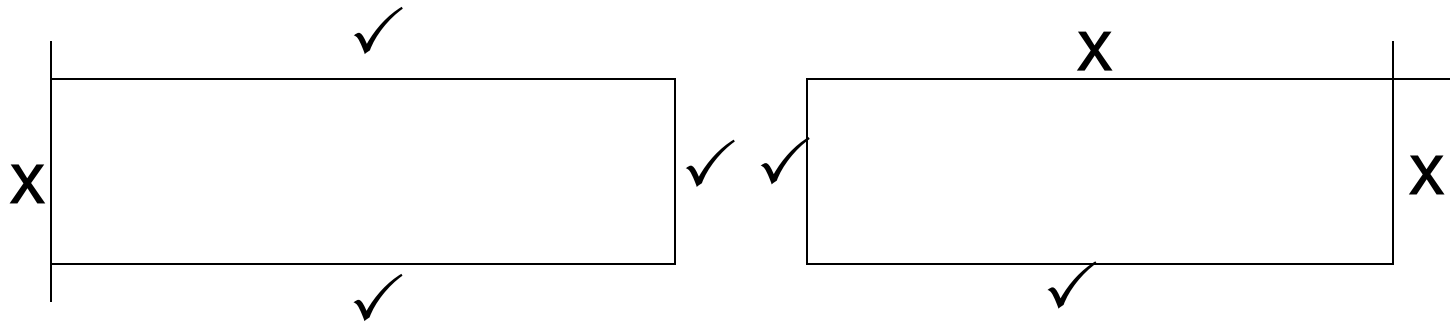
- (a)** Marks for each candidate response must always be assigned in line with these general marking principles and the specific Marking Instructions for the relevant question. If a specific candidate response does not seem to be covered by either the principles or detailed Marking Instructions, and you are uncertain how to assess it, you must seek guidance from your Team Leader/Principal Assessor.
- (b)** Marking should always be positive ie, marks should be awarded for what is correct and not deducted for errors or omissions.

GENERAL MARKING ADVICE: Graphic Communication Higher

The marking schemes are written to assist in determining the “minimal acceptable answer” rather than listing every possible correct and incorrect answer. The following notes are offered to support Markers in making judgements on candidates’ evidence, and apply to marking both end of unit assessments and course assessments.

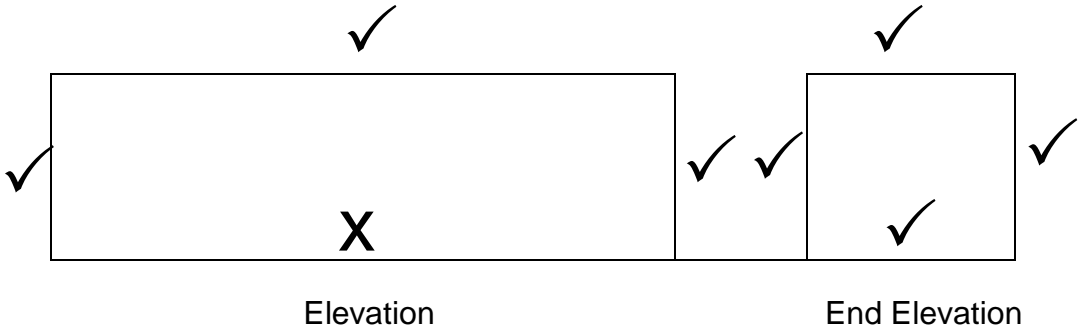


Penalty when a line is continued across a base



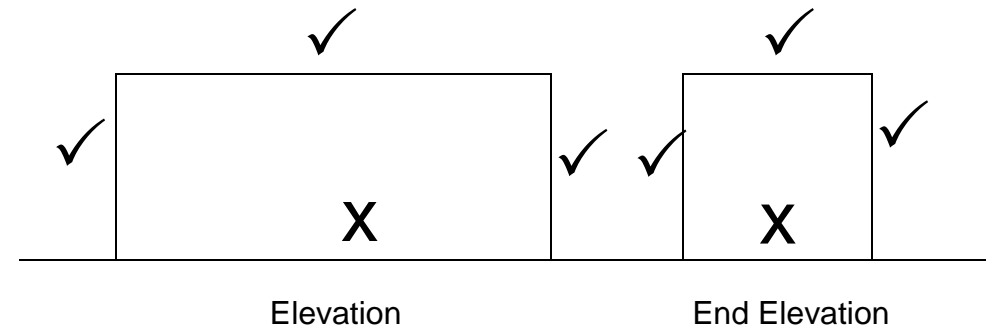
Penalty when a line is extended/continued incorrectly

Penalty when a line is incorrectly projected to another view



Elevation

End Elevation



Elevation

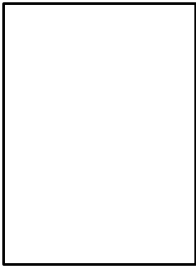

End Elevation

Part Two: Marking Instructions for each Question

Question			Expected Answer/s	Max Mark	Additional Guidance
1	a	i	Column rule.	1	
		ii	Folio/Footer	1	
		iii	Caption	1	
		iv	Point	1	
		v	Reverse	1	
	b	i	To generate a document specification. To investigate the target market and function of the proposed document.	1	
		ii	To develop ideas and page layouts for the document.	1	
		iii	To establish the position and size of the component parts of the document. To enable an electronic version of the document to be produced.	1	
			Total marks	8	

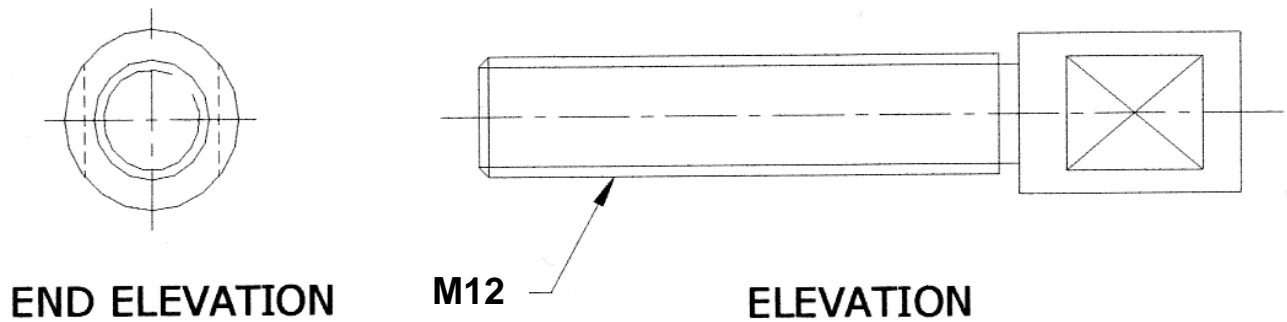
Question		Expected Answer/s	Max Mark	Additional Guidance
2	a	<p>1 mark for each correct command</p>	5	
	b	<p>Standardisation of parts</p> <p>Quality control</p> <p>Drawing to British Standards</p>	1	
		Total marks	6	

Question		Expected Answer/s	Max Mark	Additional Guidance
3	a	Dimensional tolerance	1	
	b i	They may affect the function of the product	1	
	ii	They may affect the interchangeability of the product	1	
		Total marks	3	

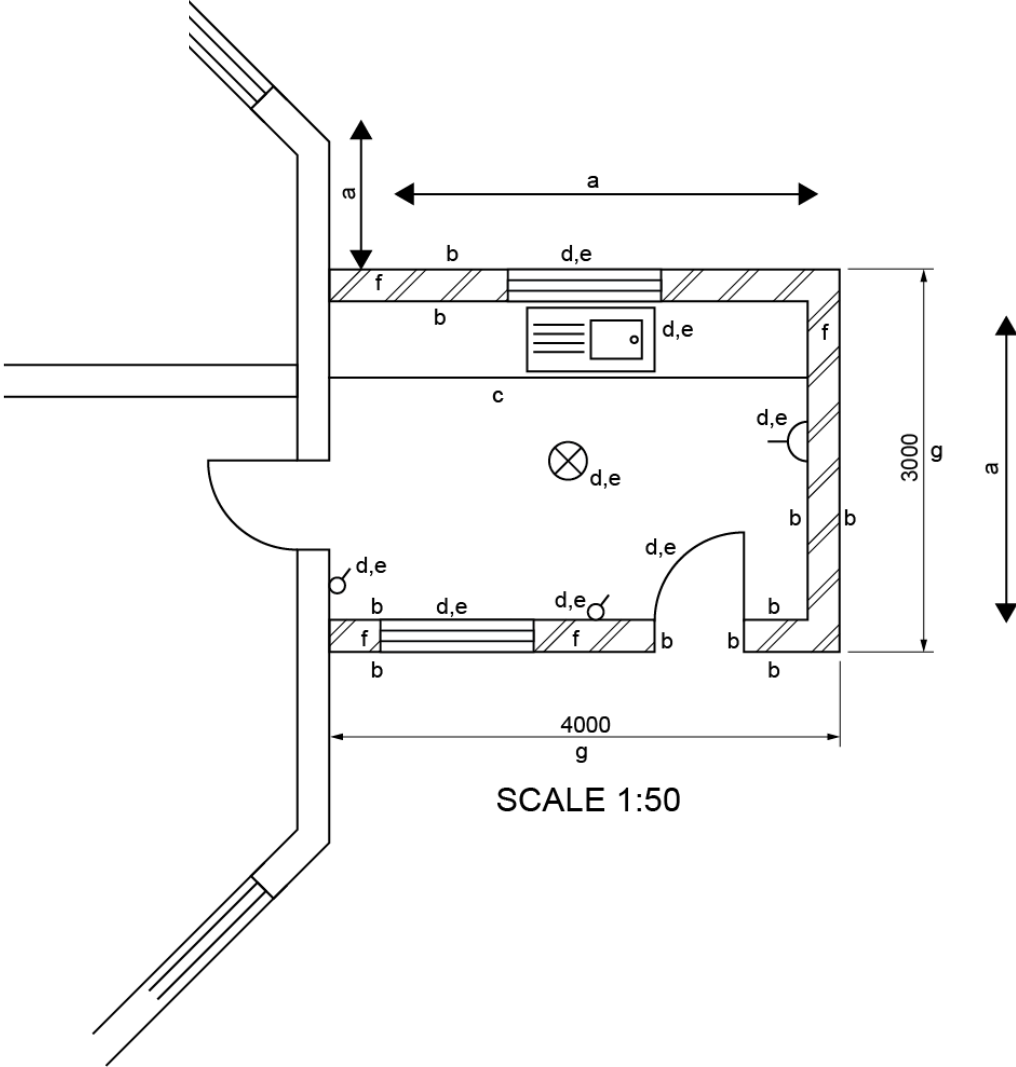
Question			Expected Answer/s	Max Mark	Additional Guidance
4	a	i	The size of the drawing sheet	1	
		ii	The size of the object being depicted	1	
		iii	The degree of detail required	1	
	b	i	Double the size	1	
		ii	Half the size	1	
	c	i	Portrait 	1	
	c	ii	Landscape 	1	
			Total marks	7	

Question		Expected Answer/s	Max Mark	Additional Guidance
5	a	<p>Promotional</p> <p>To bring people's attention to or highlight the house or special features of the house. To inform the public about the house. To sell or advertise the house.</p>	1 1	
	b	<p>Preliminary</p> <p>To convey ideas to a client. To assist in the analysing and planning of the design process.</p>	1 1	
	c	<p>Production</p> <p>To allow the object to be manufactured/ constructed accurately. To provide accurate information.</p>	1 1	
		Total marks	6	

Question			Expected Answer/s	Max Mark	Additional Guidance
6	a		Standardisation gives universal comprehension	1	
	b	i	Third angle projection	1	
		ii	Across the flats	1	
		iii	Radius	1	
		iv	Diameter	1	
	c		Revolved section at X Removed section at Y-Y	1 1	
	d	i	Thread diameter 12 mm Any correct BS for 1 mark	1	
	d	ii	Flat surface	1	
	d	iii	External thread	1	
			Total marks	10	



Question 7a – Floor Plan extension



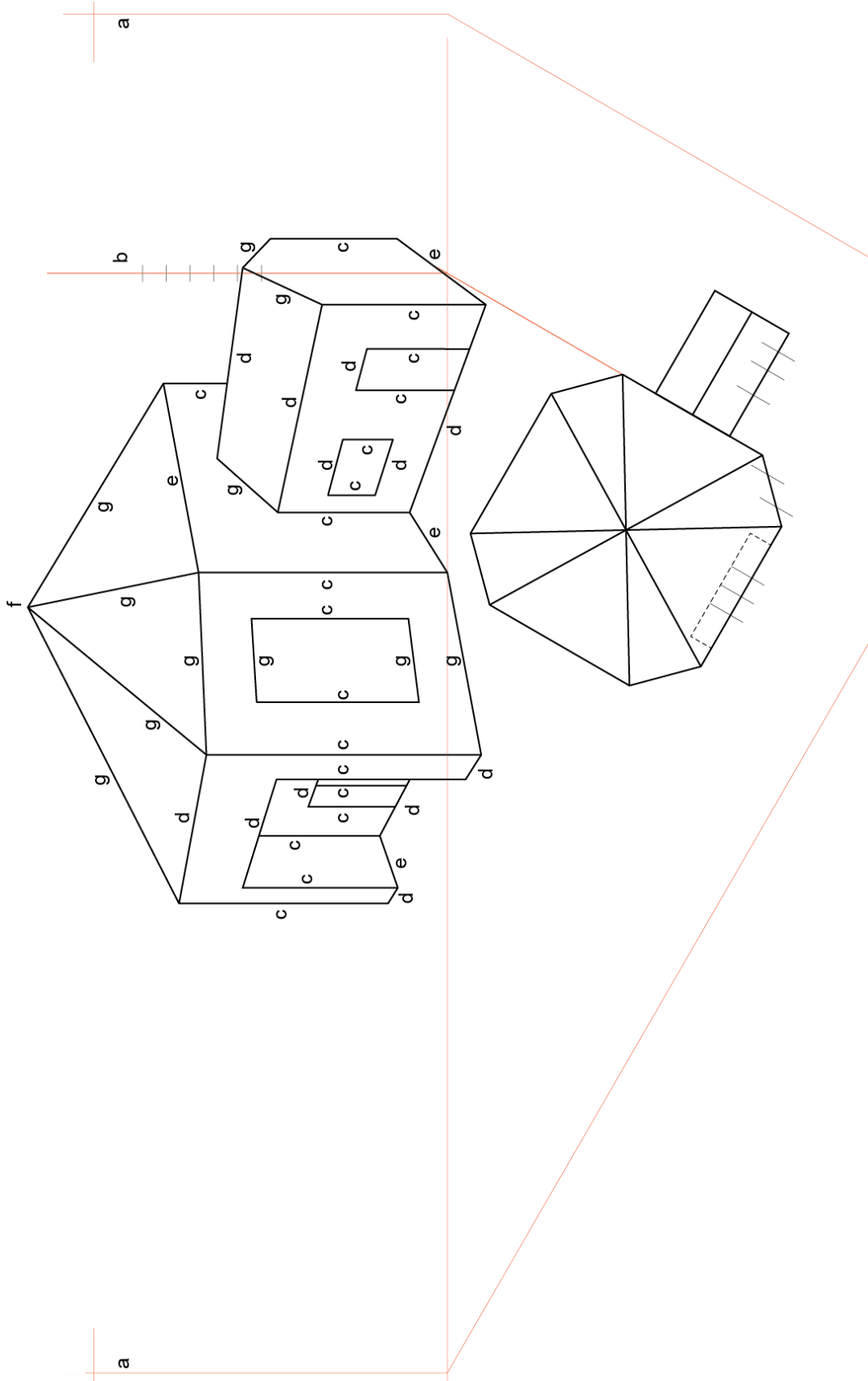
Question 7a – Floor Plan Extension

Question		Expected Answer/s	Max Mark	Additional Guidance
7	a	Correct length, breadth and location for 1	1	
	b	Wall outline 10: 6 horizontal, 4 vertical (6 for 1), (10 for 2)	2	the vertical lines forming the door opening are included in the wall outline.
	c	Worktop; line and location out from wall for 1	1	
	d	Windows, door, sink-top, lamp, switches and socket location: (4 for 1), (8 for 2)	2	Correct orientation of sink-top required
	e	Windows, door, sink-top, lamp, switches and socket drawn to BS: (4 for 1), (6 for 2)	2	
	f	Hatching to BS on 4 areas for 1	1	
	g	Dimensions to BS for 1	1	
		Total marks	10	

Notes:

The vertical lines forming the window openings are **not included** in the wall outline but form part of the BS window symbol.

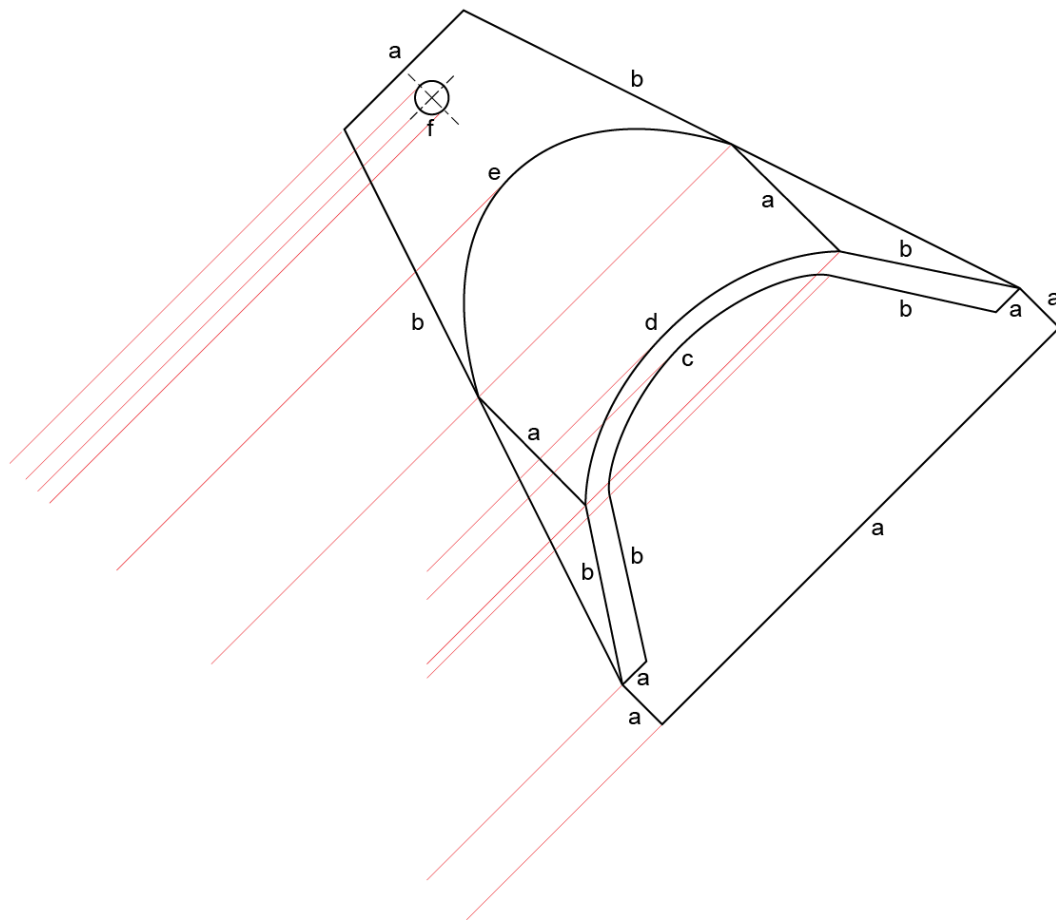
Question 7b – Visitors Centre: Measured Perspective



Question 7b – Visitors Centre: Measured Perspective

Question		Expected Answer/s	Max Mark	Additional Guidance
8	a	VP _R and VP _L vanishing points to left and right	1	
	b	Height line, any one correctly positioned and used	1	
	c	Vertical lines 18: Walls 10, Windows 4, Doors 4, Correct vertical location, (2 for 1), (5 for 2), (8 for 3), (11 for 4), (14 for 5), (16 for 6), (18 for 7)	7	Correct location and a start/finish required.
	d	Lines to Left VP 12: Walls 8, Windows 2, Door 2. (2 for 1), (5 for 2), (8 for 3), (10 for 4), (12 for 5)	5	
	e	Lines to Right VP 4: Walls 4 (2 for 1), (4 for 2)	2	
	f	Height of roof correctly located	1	
	g	Sloping lines 11: Main roof 4, Extension roof 3, Wall 2, Window 2. (4 for 1), (7 for 2), (11 for 3)	3	
		Total marks	20	
Notes:				
All outlines must be clearly defined.				

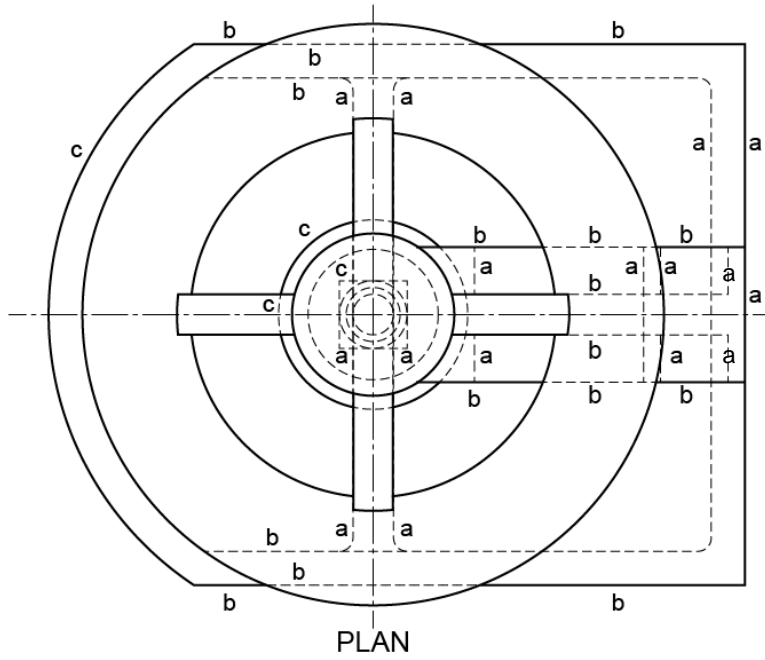
Question 8 – Auxiliary Bat Box



Question 8 – Auxiliary Bat Box

Question		Expected Answer/s	Max Mark	Additional Guidance
8	a	Solid lines 8: 4 @ 45° to right, 4 @ 45° to left. (3 for 1), (6 for 2), (8 for 3)	3	
	b	Sloping lines solid 6 (3 for 1), (6 for 2)	2	
	c	Part ellipse bottom, 3 critical, 2 intermediate (2 for 1), (4 for 2), (5 for 3)	3	
	d	Part ellipse top, 3 critical, 2 intermediate (2 for 1), (4 for 2), (5 for 3)	3	
	e	Part ellipse back, 3 critical, 2 intermediate (3 for 1), (5 for 2)	2	
	f	Circle solid:	1	
		Total marks	14	

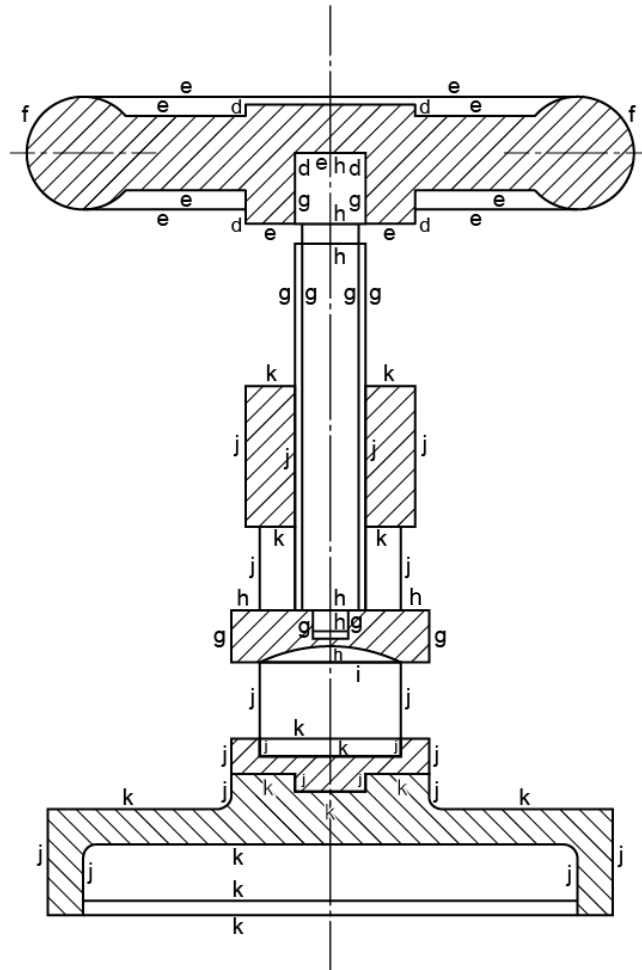
Question 9 – Watch Clamp



Question 9 – Watch Clamp

Question	Expected Answer/s	Max Mark	Additional Guidance	
Plan				
9	a	Vertical lines full and hidden 16 (5 for 1), (10 for 2), (16 for 3)	3	
	b	Horizontal lines full and hidden 16 (5 for 1), (10 for 2), (16 for 3)	3	
	c	Circular part full/hidden 4 (2 for 1), (4 for 2)	2	

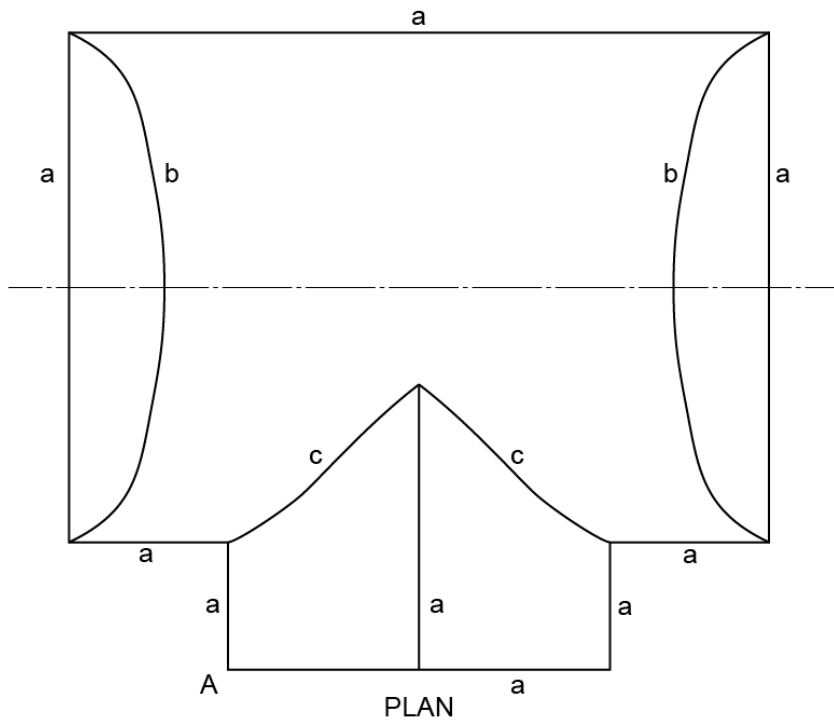
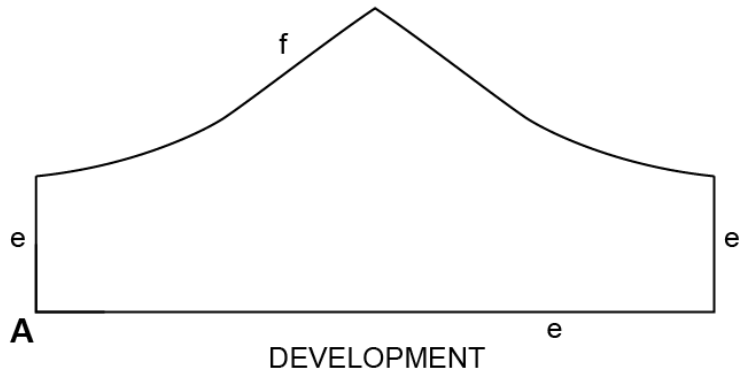
Question 9 – Watch Clamp



Question 9 – Watch Clamp

Question	Expected Answer/s	Max Mark	Additional Guidance
Sectional end elevation – Adjustment wheel			
d	Vertical lines 6	1	
e	Horizontal lines 11 (5 for 1), (11 for 2)	2	
f	Part circle 2	1	
Sectional end elevation – Bolt and top cap			
g	Vertical lines 10 (5 for 1), (10 for 2)	2	
h	Horizontal lines 9 (4 for 1), (9 for 2)	2	
i	Curve	1	
Sectional end elevation – Body and base cap			
j	Vertical lines 20 (6 for 1) (13 for 2), (20 for 3)	3	
k	Horizontal lines 14 (7 for 1), (14 for 2)	2	
l	Fillets in both plan and sectional end elevation (Any 4 for 1)	1	
m	Hatching 6 areas (3 for 1), (6 for 2)	2	
	Total marks	25	

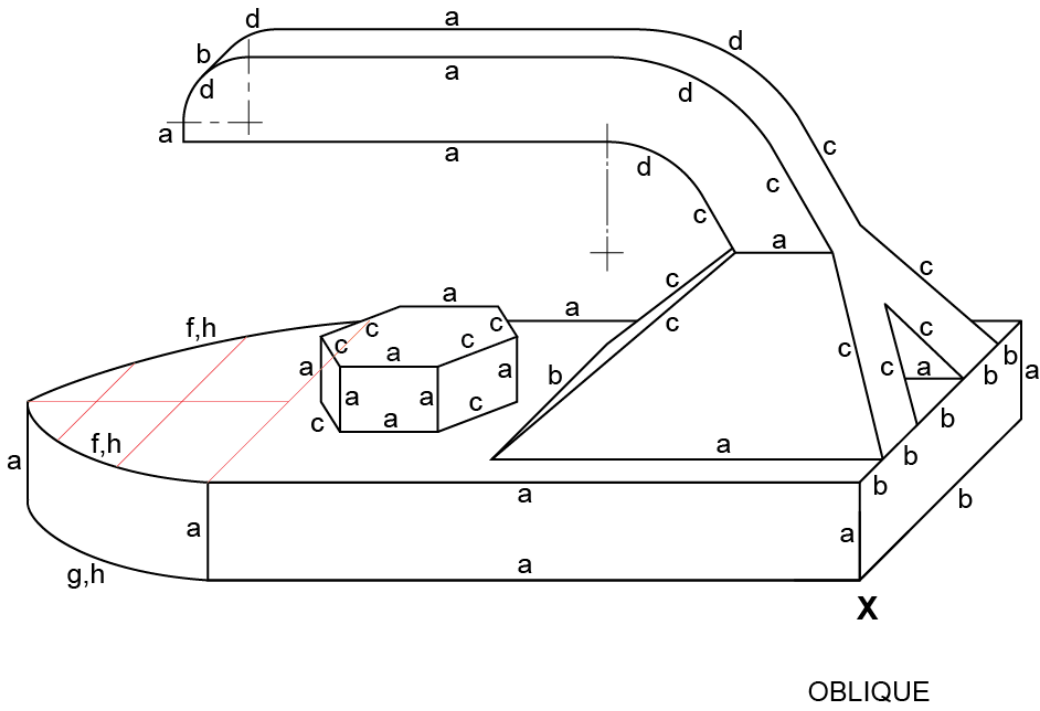
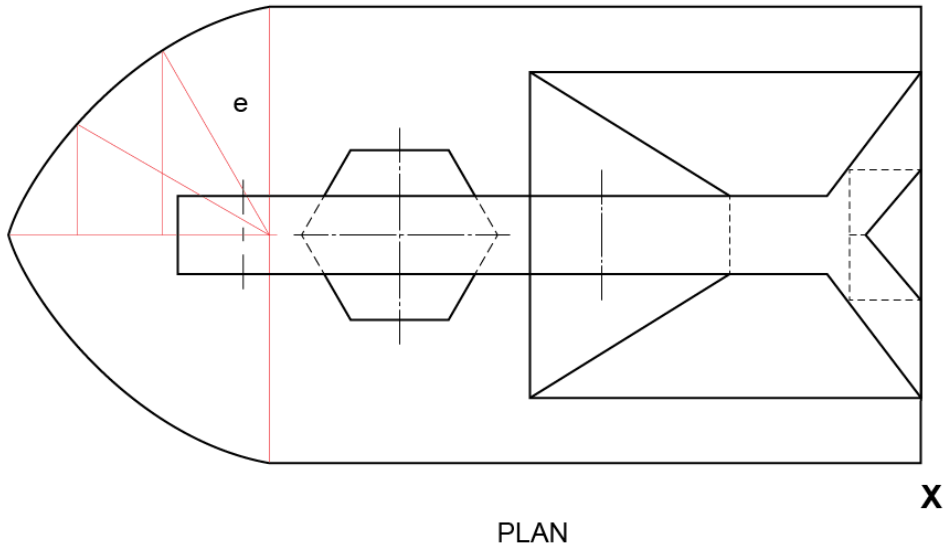
Question 10 – Wall Light



Question 10 – Wall Light

Question	Expected Answer/s	Max Mark	Additional Guidance
Plan			
a	Horizontal and vertical lines 9 (4 for 1), (9 for 2)	2	
b	Curve both sides 14 points (6 critical, 8 intermediate) (6 for 1), (14 for 2)	2	
c	Curve of intersection (3 critical, 4 intermediate) (3 for 1), (7 for 2)	2	
Development			
d	Overall length (+ 3mm, – 3mm)	1	
e	Horizontal and vertical lines 3 (3 for 1)	1	
f	Curve, 7 points (3 critical, 4 intermediate) (3 for 1), (7 for 2)	2	
g	Fair curve at b, c and f	1	
	Total Marks	11	

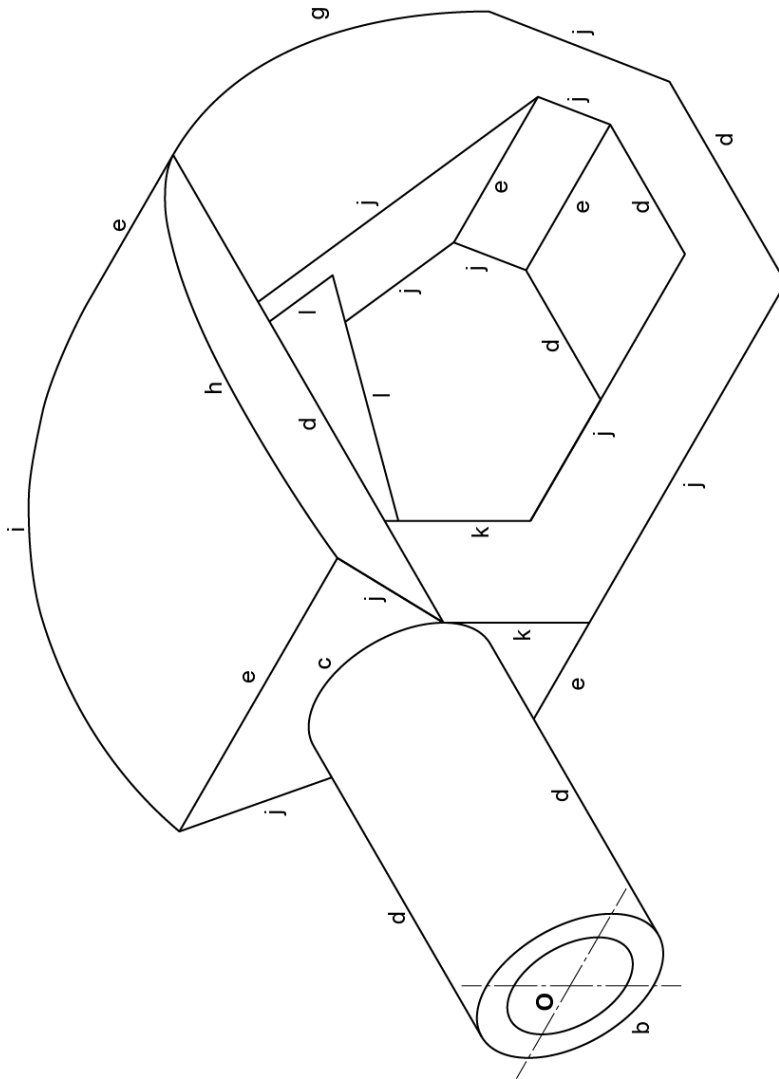
Question 11 – Travel Iron



Question 11 – Travel Iron

Question		Expected Answer/s	Max Mark	Additional Guidance
	a	Lines 22, vertical 9, horizontal 13: (4 for 1), (8 for 2), (12 for 3), (16 for 4), (22 for 5)	5	
	b	Lines 8 at 45°: (4 for 1), (8 for 2)	2	
	c	Sloping lines 15: (5 for 1), (10 for 2), (15 for 3)	3	
	d	Arcs 5: location and radius required. (2 for 1), (4 for 2), (5 for 3)	3	
	e	Construction for arch shown clearly on plan:	1	
	f	Top arch, 7 points: 3 critical, 4 intermediate (3 for 1), (5 for 2), (7 for 3)	3	
	g	Part arch 4 points: 2 critical, 2 intermediate (2 for 1), (4 for 2)	2	
	h	Fair curves 3: (3 for 1)	1	
		Total marks	20	

Question 12 – Petrol Pump Handle



ISOMETRIC

Question 12 – Petrol Pump Handle

Question		Expected Answer/s	Max Mark	Additional Guidance
12	a	Construction for circles on elevation and end elevation	1	
	b	Isometric Circle 12 points: 4 critical, 8 intermediate (6 for 1), (12 for 2)	2	
	c	Part circle 5 points:	1	
	d	Lines @ 30° to right 6: (3 for 1), (6 for 2)	2	
	e	Lines @ 30° to left 5: (3 for 1), (5 for 2)	2	
	f	Construction for arcs on elevation and end elevation	1	
	g	Curve at right 4 points: 2 critical, 2 intermediate	1	
	h	Curve at top front 4 points: 2 critical, 2 intermediate (2 for 1), (4 for 2)	2	
	i	Curve at back 4 points: 2 critical, 2 intermediate (2 for 1), (4 for 2)	2	
	j	Sloping lines 9: (3 for 1), (6 for 2), (9 for 3)	3	
	k	Vertical lines 2:	1	
	l	Lines for trigger 2: Correct position and correct angle 1 mark for each line	2	
		Total marks	20	

[END OF MARKING INSTRUCTIONS]